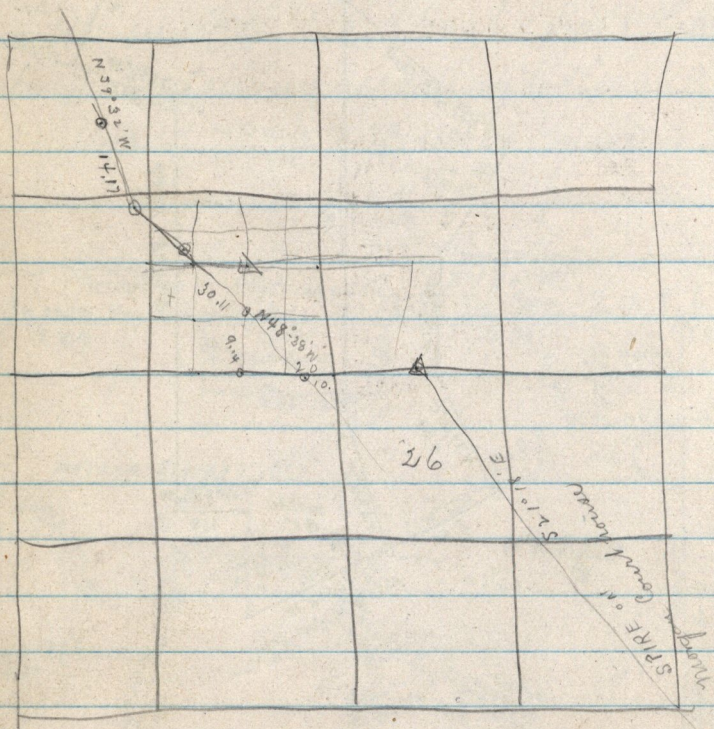


Sept 8 - 1885

Copy of Receiver's Receipt to George Clauson,
N.W. 1/4 S.W. 1/4 Sec 22 T 4

N.R. 2 E, 40 acres - Dated August 14 - 1885



Part of

Magnetic N 17° E.

Req. N.E. cor. N.W. 1/4 26 T 4 N.R. 2 E - W. 60.00 ch
 N. 9.14 ch to center U.P. R.R., N 48° 38' W. 30.11 in track
 N 39° 32' W. 14.17 and West 8.06 ch to Clauson
 W.E. cor. which came about 2 rods north from
 original station but lost by ...